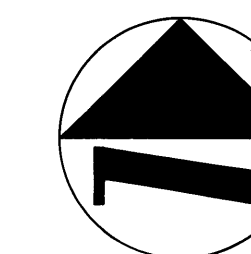


PLAT NO. 3 SAILFISH POINT P.U.D.

LYING IN PART OF FRACTIONAL SECTION 8, TOWNSHIP 38 SOUTH,
RANGE 42 EAST, MARTIN COUNTY, FLORIDA.

OCTOBER 1980

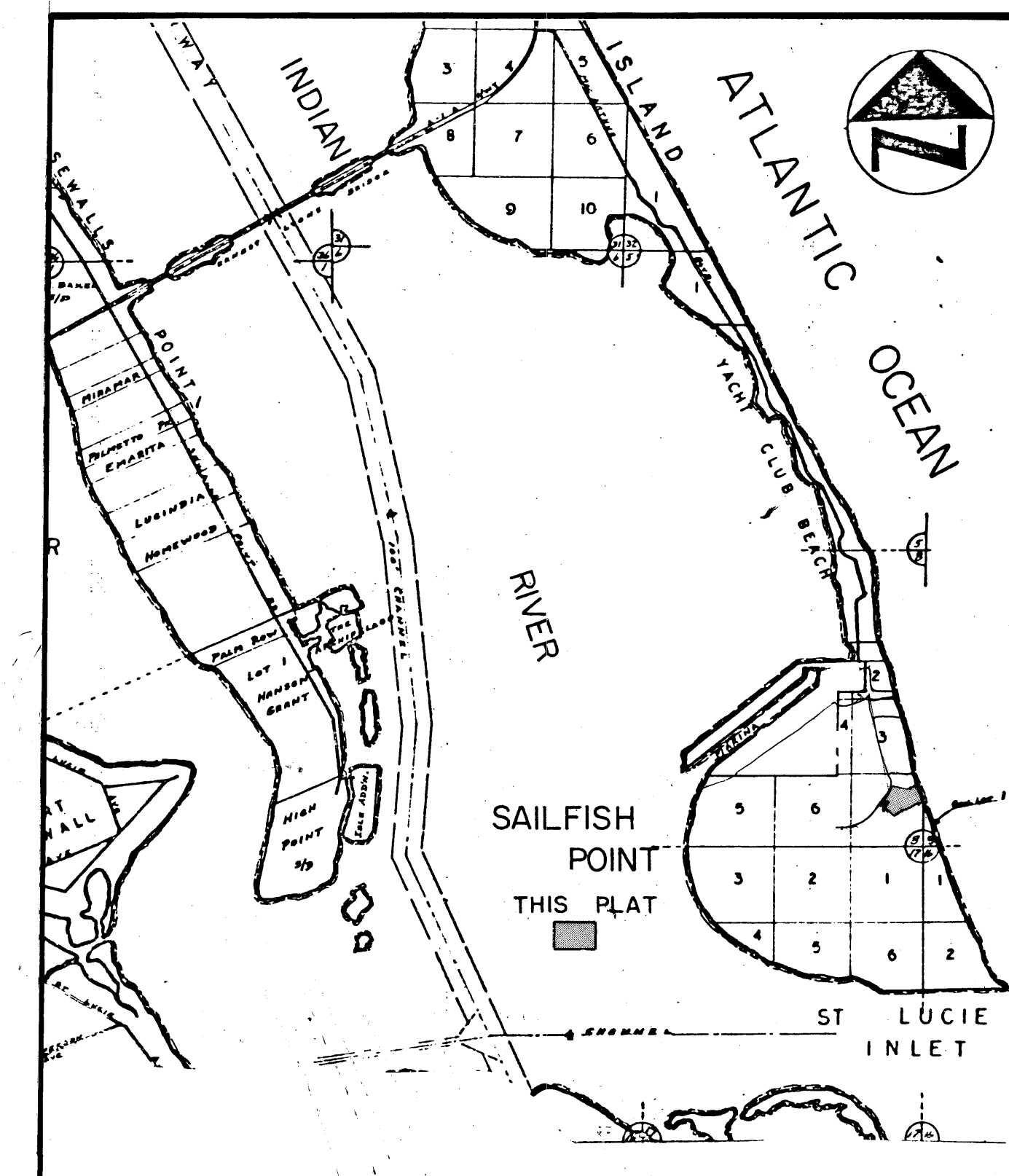
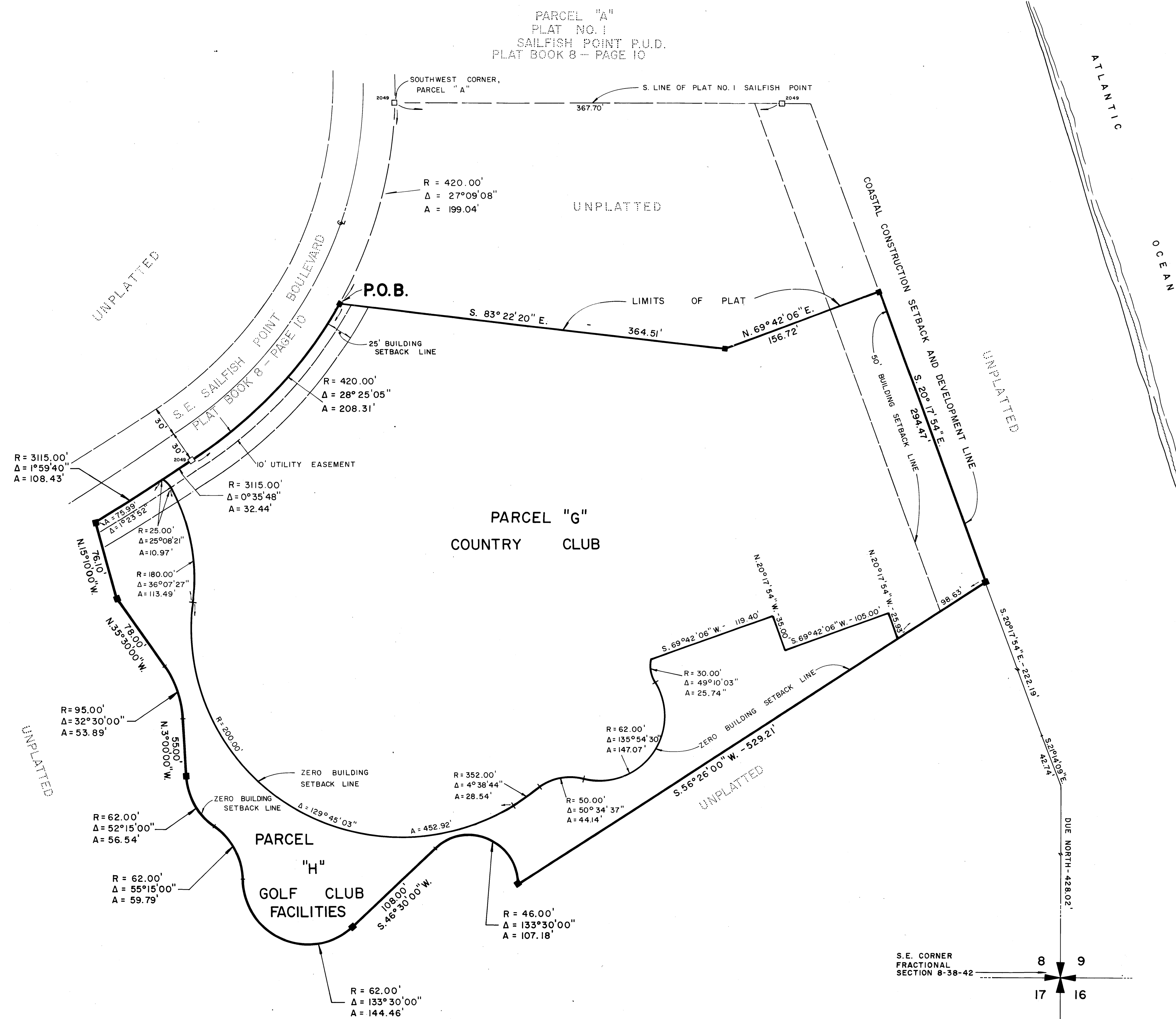


I, LOUISE V. ISAACS,
CLERK OF THE CIRCUIT
COURT OF MARTIN COUNTY,
FLORIDA, HEREBY CERTIFY
THAT THIS PLAT WAS FILED
FOR RECORD IN PLAT BOOK
PAGE 49 MARTIN
COUNTY, FLORIDA, PUBLIC
RECORDS, THIS DAY
OF _____, 1980.

LOUISE V. ISAACS, CLERK
CIRCUIT COURT
MARTIN COUNTY, FLORIDA

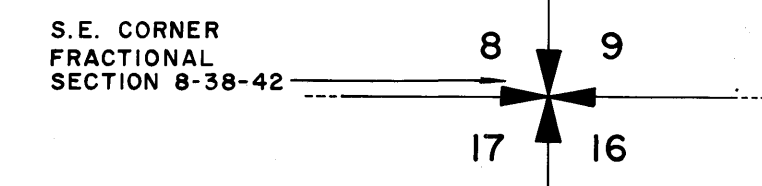
BY: _____

FILE NO. _____



VICINITY SKETCH N.T.S.

- SURVEYOR'S NOTES:**
- MONUMENTATION:**
- - DENOTES FOUND PERMANENT REFERENCE MONUMENT (P.R.M.)
 - - DENOTES PERMANENT REFERENCE MONUMENT (P.R.M.)
 - - DENOTES PERMANENT CONTROL POINT (P.C.P.)



BEARING BASE
ALL BEARINGS SHOWN HEREON ARE RELATIVE TO THE
BEARINGS SHOWN ON PLAT NO. 1, SAILFISH POINT
PLAT BOOK 8, PAGE 10.

LINDAHL, BROWNING & FERRARI, INC.
Consulting Engineers, Planners & Surveyors
426 INDIANTOWN ROAD JUPITER, FLORIDA 33458
951 COLORADO AVENUE STUART, FLORIDA 33494

2	2
---	---

P & B BLUEPRINTERS, WEST PALM BEACH